

Presentation



Mineralogical Influence on Leaching Behaviour of Steelmaking Slags

Fredrik Engström

Division of Sustainable Process Engineering

Background - Steel Slags

Sweden

2008: 1.3 million tonnes slag

External use: ~ 35 %

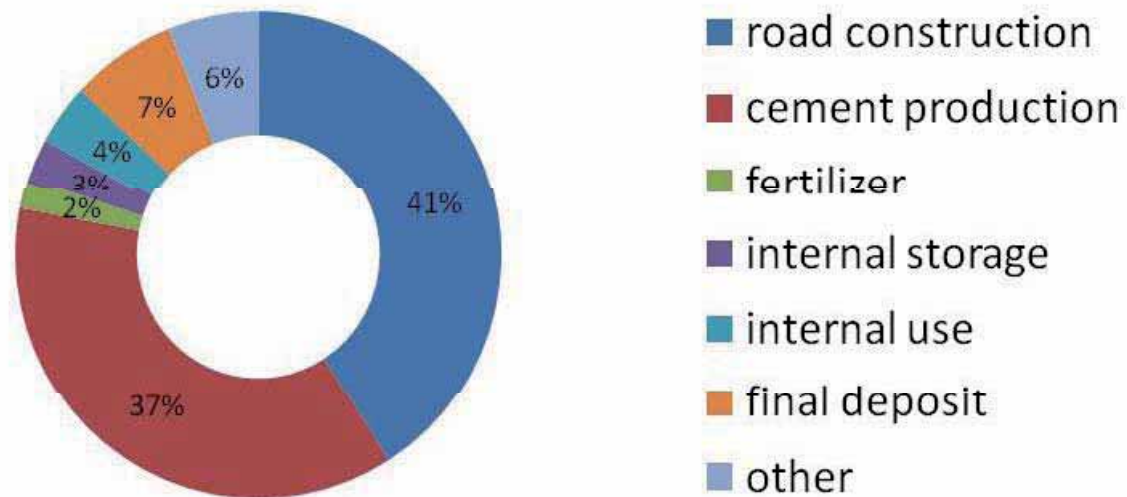
Landfilling: ~ 20 %

Europe

2006: ~ 45 million tonnes slag

External use: ~ 80 %

Europe



Conditions in Sweden

- 35 million tonne virgin material used in construction annually

- Good access to high quality natural stone material

- Criteria for use in building applications and road construction are missing for these materials
- High availability of land for land filling
- “Fear” of using by-products

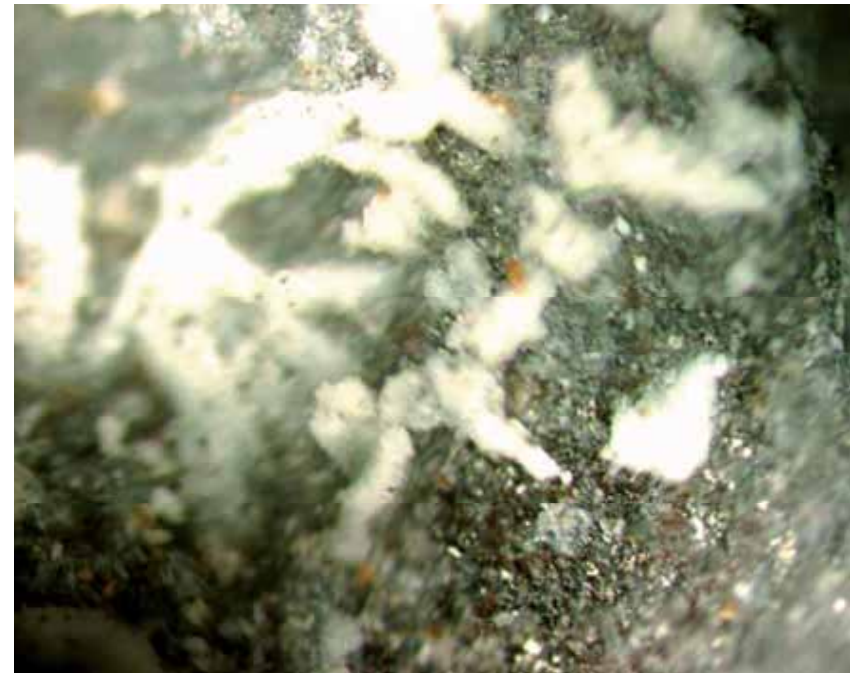


Obstacle



for use in external applications

- Leaching of metals
- Volume expansion
- Disintegration



Aim and Factors Investigated

AIM: Linking leaching properties with process parameters

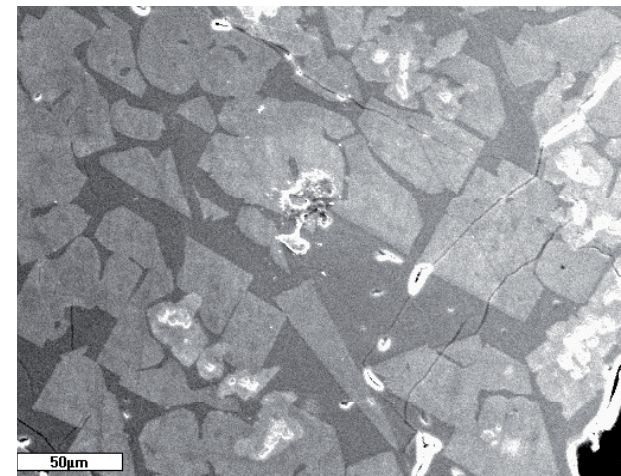
Factors investigated!

- Possibilities of modifying in hot stage
- Influence of cooling
- Influence of ageing

Multi-crystalline material!

Formulation of hypothesis

Do different slag minerals dissolve differently?



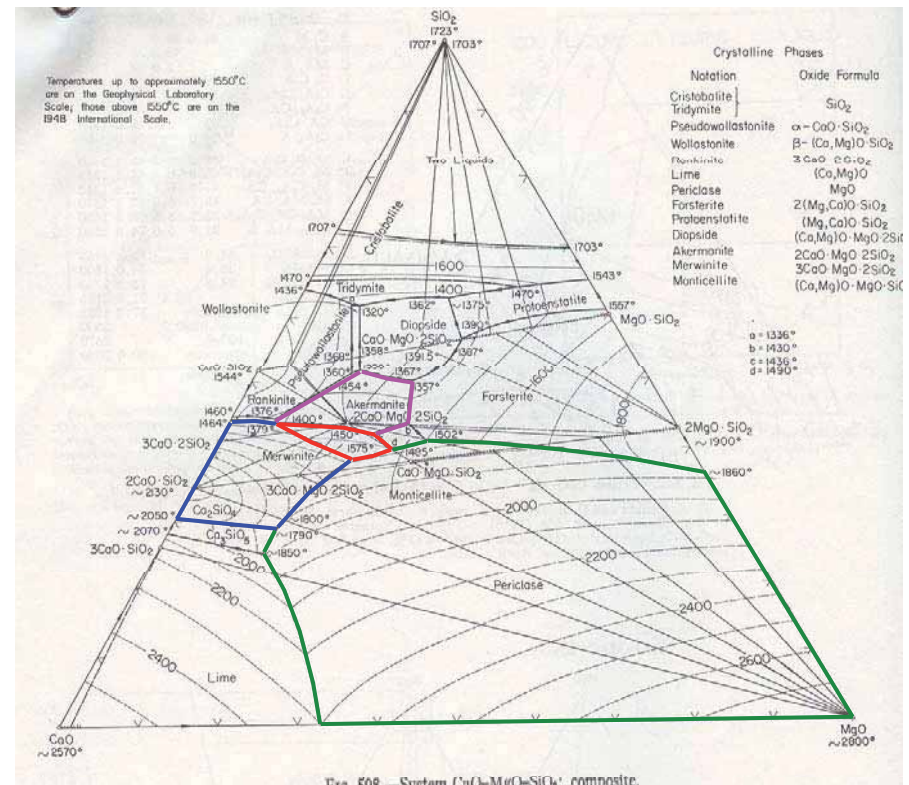
The hypothesis, P (V)



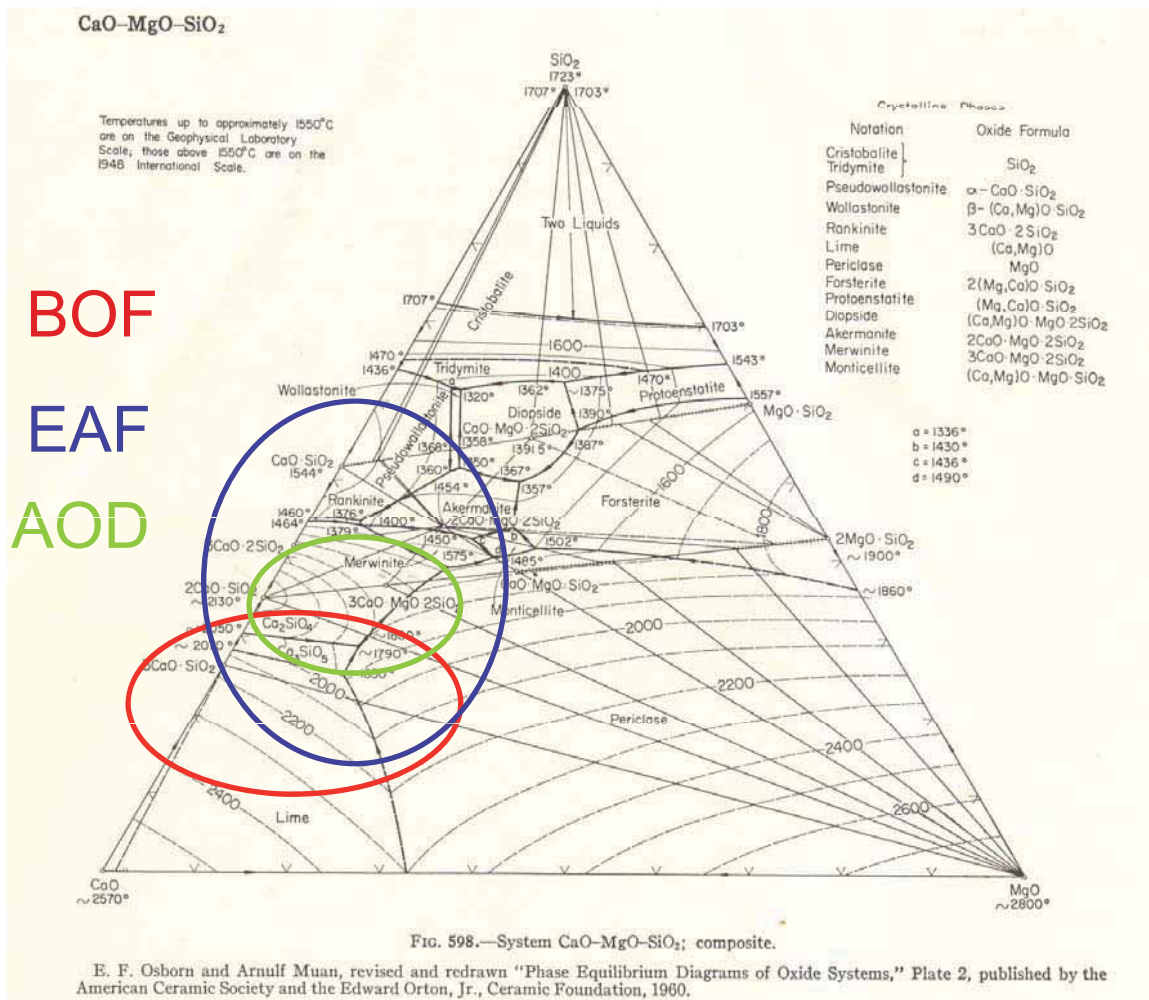
If different slag minerals dissolved differently how will that influence the leaching of a specific metal?
 Could it be an explanation why the leaching is not following chemical composition? Example Cr!

Dissolves chromium

Merwinite	Yes
Akermanite	No
γ - Ca_2SiO_4	No
MgO	Yes
Gehlenit	No
$\text{Ca}_2\text{Fe}_2\text{O}_5$	Yes
$3\text{CaO} \cdot \text{Al}_2\text{O}_3$	No



Syntheses of slag minerals, P (V)

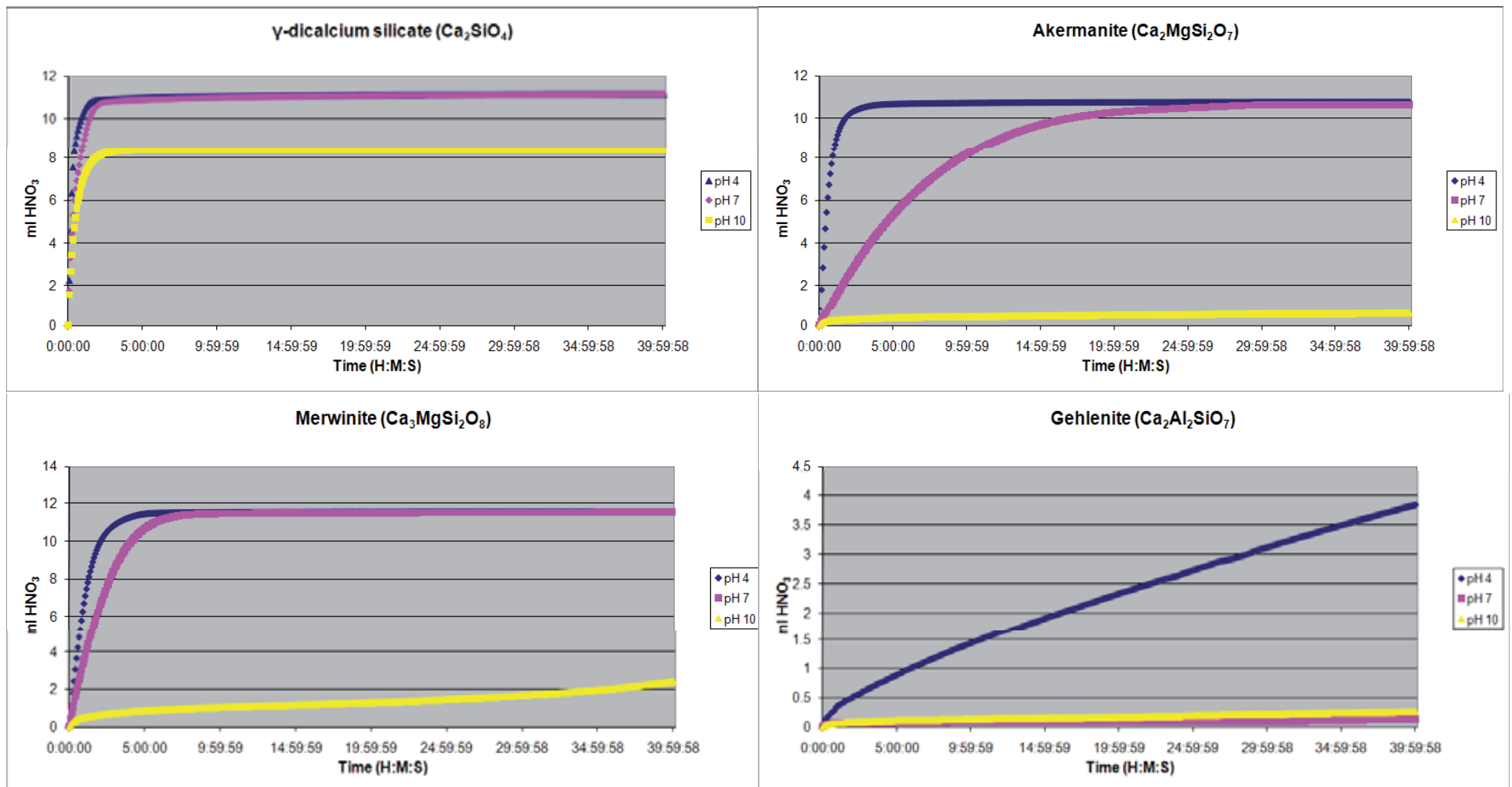


Six common slag minerals!

- Mayenite $\text{Ca}_{12}\text{Al}_{14}\text{O}_{33}$
- Merwinite $\text{Ca}_3\text{MgSi}_2\text{O}_8$
- Akermanite $\text{Ca}_2\text{MgSi}_2\text{O}_7$
- Gehlenite $\text{Ca}_2\text{Al}_2\text{SiO}_7$
- Ingesonite $\gamma\text{-Ca}_2\text{SiO}_4$
- Tricalcium alum. $\text{Ca}_3\text{Al}_2\text{O}_6$

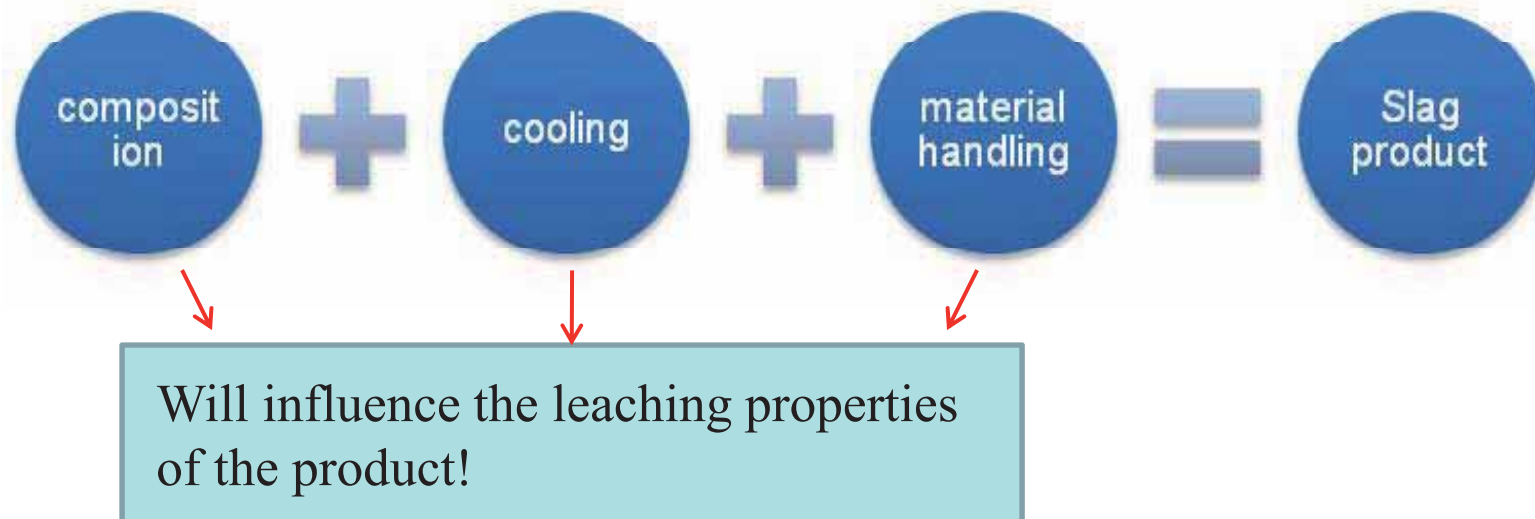
Synthetic slag minerals/titration, P (V)

20-38 μm size fraction, 0.1 M HNO_3 , 50 mg mineral / 100 ml H_2O



Conclusions / Parameters effecting slag product

AIM: Linking the leaching properties with variations in process parameters!



Acknowledgement



MiMeR
Minerals and Metals Recycling Research Centre

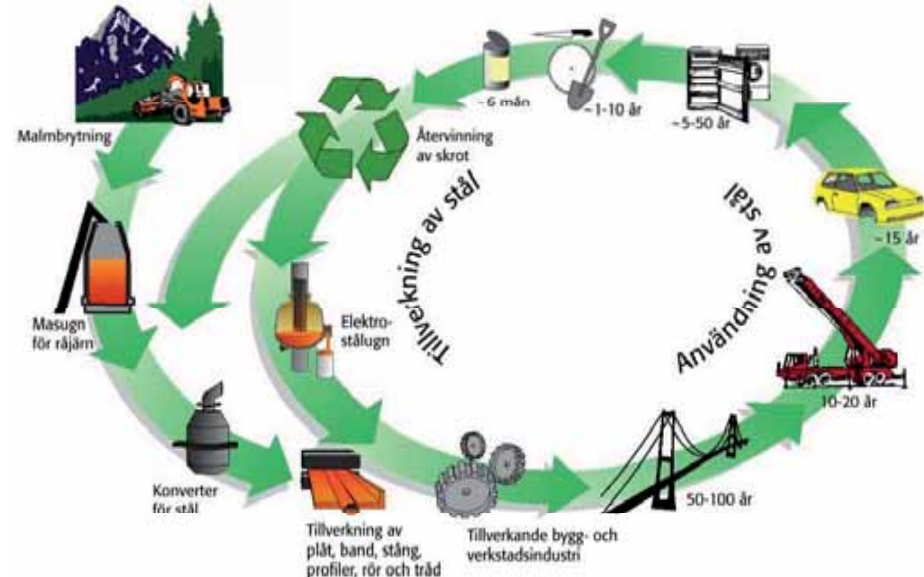


AMM
CENTRE OF ADVANCED MINING
AND METALLURGY

OUTOKUMPU

SSAB

MISTRA
STIFTELSEN FÖR MILJÖSTRATEGISK FORSKNING



OVAKO



Höganäs

JERNKONTORET



Skandinavians nordligaste tekniska universitet
Forskning & utbildning i världsklass

