

SGU

Sveriges geologiska undersökning
Geological Survey of Sweden

The Geological Survey of Sweden is the expert agency for issues relating to soil, bedrock and groundwater in Sweden.



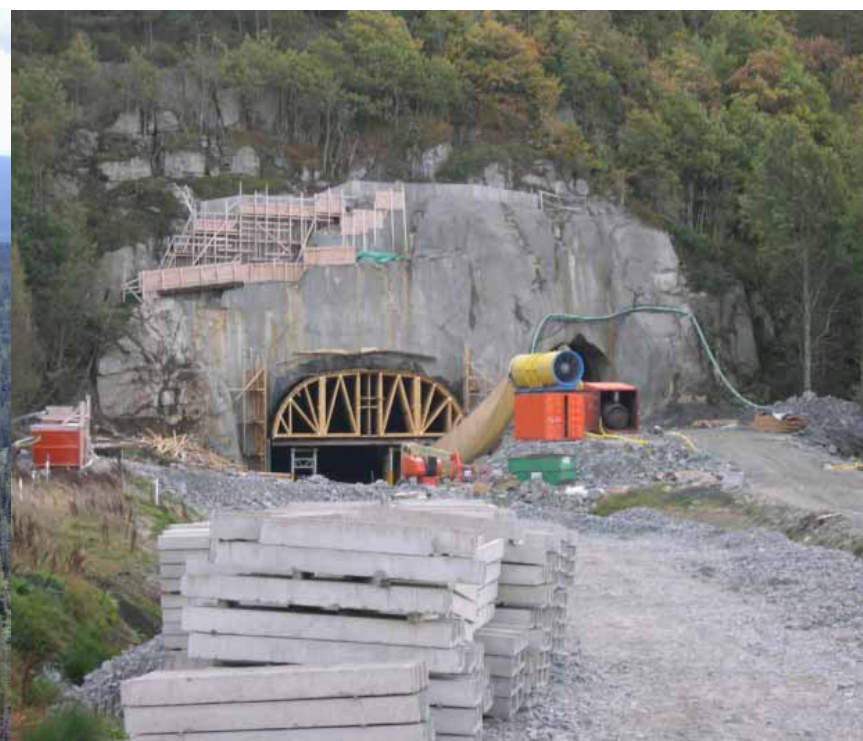
SGU's mission

- Supporting the development of the mining, bedrock and mineral industry



SGU's mission

- Promoting the use of geological information in societal planning



SGU

Sveriges geologiska undersökning
Geological Survey of Sweden

SGU's mission

- Strengthening geological research in Sweden

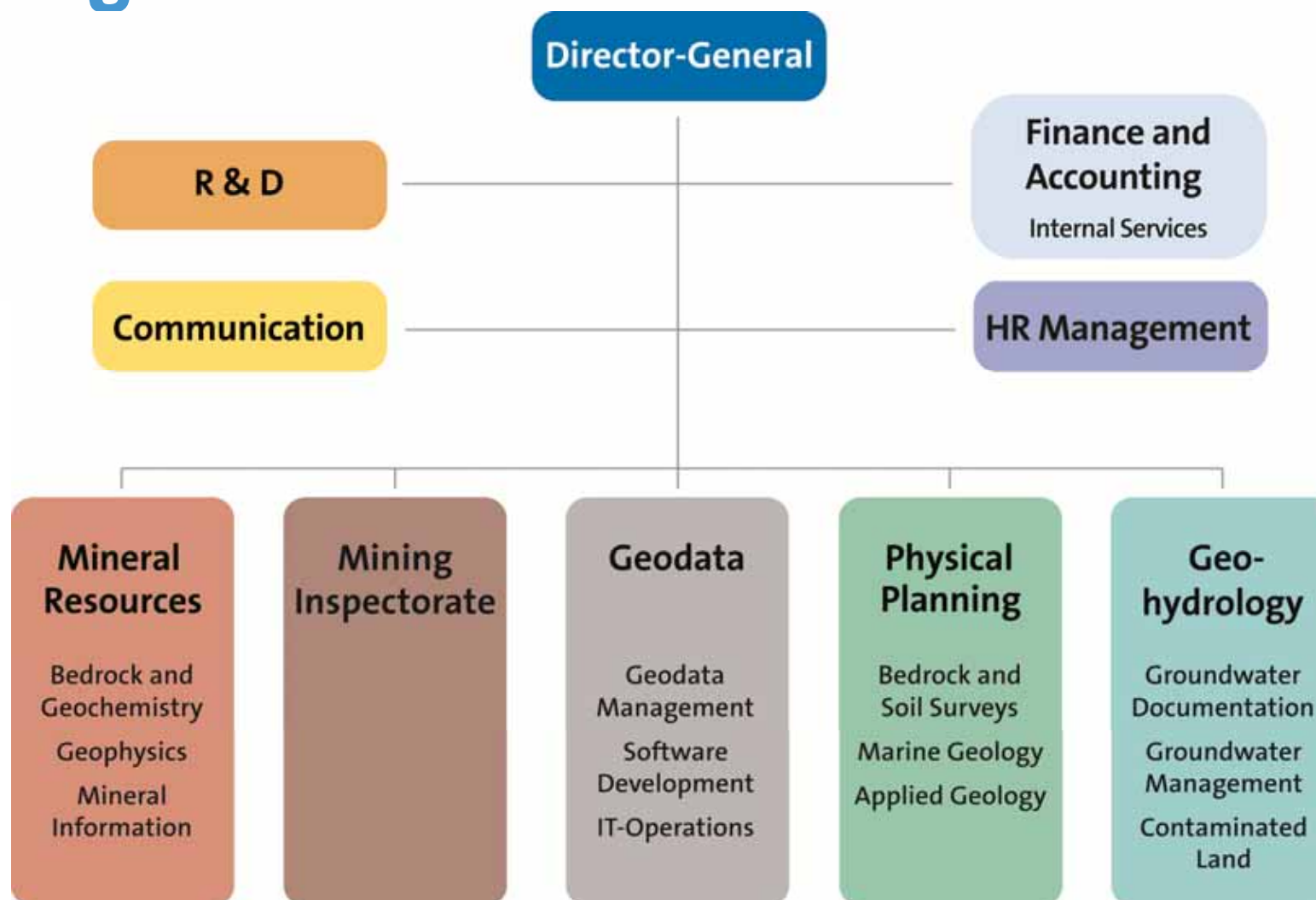


SGU's mission

- **Emphasizing geology and geological knowledge in general and especially in education**



Organisation



SGU

Sveriges geologiska undersökning
Geological Survey of Sweden

A comprehensive swedish mineral strategy



Background

Deficit in Europe concerning a lot of important metals: tin, cobalt, molybdenum, nickel, zinc, lead, copper, REE, even iron.

A lot of those metals and minerals are needed in a modern technology – especially in energy-effective and environment technology.



40 different metals and minerals, i.e. lithium, tantalum, cobalt and antimony.

A computer contains 60 different elements, many from outside Europe.

Sweden has the potential

- Mineral and ore deposits
- Lots of land, space
- Comprehensive legislation
- Fairly good infrastructure
- Good conditions in the labour-market
- A long tradition as a mining country.

Why a national mineral strategy?

There is a need for

- More basic knowledge about possible mineral deposits
- Support to the prospecting industry
- R & D
- New infrastructure
- Environmental control and technology development
- Recycling policy
- Geological competence
- Effective legislative processes

The aim is a sustainable development of the mineral industry, the mining regions and the society.

- Increased R & D in ore geology.
- "Mineral extraction of the Future". A cooperation between industry and authorities to create a highly automatic, safe, environmentally good, effective mining in Sweden.
- Development of the infrastructure to support the mining industry.

- Education on all levels in geology and mining.
- Effective legislative procedures.
- Strong ethical rules and procedures within the industry.
- Responsibility for an authority (SGU) to continuously work with the mineral strategy and to improve it.

The banner features the SGU logo on the left and a faint background image of a geological map on the right. The map shows various regions and is overlaid with a circular seal containing the text 'SVERIGES' and 'UNDERSÖKNING'.

SGU

Sveriges geologiska undersökning
Geological Survey of Sweden

We think it is important that the national mineral strategy has clear goals (Sweden as a world class mineral country) and that it is strongly supported by the Government and on a principle level by the Parliament.

SGU

Sveriges geologiska undersökning
Geological Survey of Sweden

A national mineral policy – threat or opportunity?

